

HOW WE WORKS



Free Consultation and supervision: We start with a consultation to understand your needs and assess your property.



Survey & Assessment: Our team conducts a detailed survey to identify issues and plan solutions.



Proposal: We provide a customized plan, including cost estimates and timelines.



Execution: Authorized applicators carry out the work using high-quality materials and techniques.



Quality Control: We supervise the project closely to ensure top-notch quality and address any issues.



completion certificate?: We conduct a final check to ensure everything meets your expectations.

Safety Measures



Protective Gear: Our team uses personal protective equipment (PPE) like helmets, gloves, and harnesses to ensure safety on-site.



Secure Work Areas: cordon off work zones to protect both our team and residents from potential hazards during the waterproofing process.



Material Safety: We use certified, non-toxic materials that are safe for workers and occupants, reducing environmental impact.



Emergency Preparedness: emergency response plan in place, including first-aid kits and trained personnel, to handle any unforeseen incidents quickly

ABOUT COMPANY

we are dedicated to delivering top-notch waterproofing, painting, and civil work services across Mumbai, Greater Mumbai, Navi Mumbai, Thane, and Pune. With over 200+ projects successfully completed and more than 200+ satisfied clients, our commitment to excellence is evident in every job we undertake.

Our team of skilled professionals specializes in providing comprehensive solutions to protect and enhance your property. Whether you need advanced waterproofing systems, high-quality painting, or reliable civil work, we have the expertise and experience to meet your needs. Trust us to ensure the durability and aesthetic appeal of your buildings with our proven track record of quality and client satisfaction.

Authorized Applicators

AkzoNobel



BASF
The Chemical Company



SUNANDA

sikkens

Zydex
Innovating for Sustainability

Lodha Signet - A, 2nd floor, office no. 232,
Kolshet Road Thane (w) - 400604

- Mumbai
- Greater Mumbai
- Navi Mumbai
- Thane
- Pune



Securing Your Space with Excellence

Ensuring Long-Lasting
Durability and Protection
for Your House / Building

WATERPROOFING

PAINTING

CIVIL WORK



99872 44208

mail.wswaterproofing@gmail.com

wswaterproofing.com

WATERPROOFING

Our advanced waterproofing solutions ensure that your property remains protected from water damage and retains its structural integrity. We offer a comprehensive range of services, including:

WE SPECIALIZE IN WATERPROOFING THE FOLLOWING AREAS



Roofs Top and Building Terraces Waterproofing



Internal / Exterior Walls Waterproofing



Podium, Garden, Swimming Pool Area Waterproofing



Basements Waterproofing



Car Parking Area Waterproofing



internal flat, toilet, Bathrooms and Kitchens Waterproofing

PAINTING

Our painting services are crafted to revitalize your property, whether you're updating a single room or transforming an entire building. We provide professional, tailored solutions with a focus on quality, durability, and aesthetics.



EXPERIENCE THE DIFFERENCE WITH OUR PROFESSIONAL PAINTING SERVICES

- **Expert Craftsmanship:** Our team of skilled painters brings years of experience and attention to detail, ensuring a flawless finish every time.
- **High-Quality Materials:** We use top-grade, durable paints that offer long-lasting protection and vibrant color, tailored to your specific needs.
- **Personalized Solutions:** We work closely with you to understand your vision and deliver custom solutions that reflect your style and preferences.
- **Commitment to Excellence:** From preparation to final inspection, we ensure that every aspect of the job meets the highest standards of quality and customer satisfaction.
- **Timely Completion:** We respect your time by adhering to deadlines and completing projects efficiently, without compromising on quality.

WATERPROOFING METHODS WE FOLLOW - ENSURING EXCELLENCE WITH EVERY STEP



Detailed Survey Analysis and Thermography Test: We use surveys and thermography to detect structural issues for early repairs.

METHODOLOGY



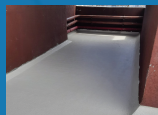
Chemical Coating: Enhance the durability of your structure with our specialized chemical coatings that offer superior waterproofing protection.



Conventional Method Waterproofing: Our traditional waterproofing techniques provide reliable, time-tested protection for various surfaces.



Joint Filling: Prevent leaks and maintain structural integrity with our expert joint filling services, ideal for sealing expansion joints and other vulnerable areas.



Internal Flat Waterproofing: Protect the interiors of your flats with our advanced internal waterproofing solutions, designed to prevent seepage and moisture damage.



Brick Bat Waterproofing: Our brick bat waterproofing method ensures effective water resistance and durability, particularly for terraces and sloping roofs.

We start with a Detailed Survey Analysis and Thermography Test to identify structural issues like moisture and heat loss. Chemical Coating is then applied for surface protection, followed by Conventional Method Waterproofing for lasting durability. We ensure water-tightness with Joint Filling, protect interiors with Internal Flat Waterproofing, and reinforce roofs and terraces using Brick Bat Waterproofing.

CIVIL WORK

Our civil work services ensure quality, safety, and durability for all construction and renovation projects. From planning to execution, we provide reliable solutions tailored to your needs.

- **Structural Repairs and Reinforcement:** Strengthen and restore the integrity of your building with expert repairs, including crack filling and column strengthening.
- **Masonry and Concrete Work:** Provide solid foundations and durable structures with comprehensive masonry and concrete services, from foundation laying to brickwork.
- **Plastering and Finishing:** Achieve smooth, high-quality finishes for your walls and ceilings with professional plastering services, compromising on quality.
- **Waterproofing Integration:** Protect your building from moisture damage with integrated waterproofing solutions that enhance durability and longevity.